

## The Brain

Label the following picture using these terms:

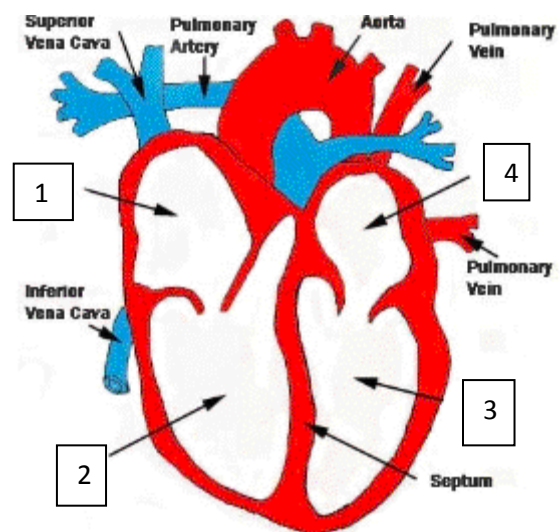
- A. Cerebrum
- B. Cerebellum
- C. Spinal cord



## The Heart

Label the following parts of the heart using these terms:

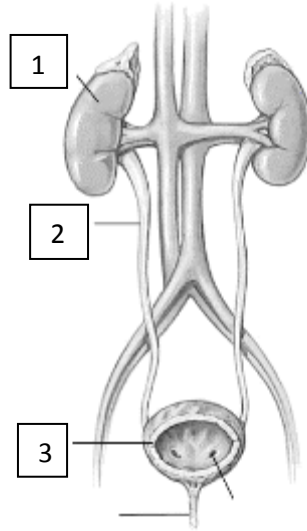
- A. Right Atrium
- B. Left Atrium
- C. Right Ventricle
- D. Left Ventricle



## Kidneys

Label the following parts on the drawing below:

- A. Bladder
- B. Kidney
- C. Ureter



## Multiple Choice

1. What part of the brain controls automatic movement, like breathing, heart beating, and blinking?
  - a. Cerebrum
  - b. Spinal Cord
  - c. Cerebellum
2. What part of the brain controls remembering?
  - a. Cerebrum
  - b. Spinal Cord
  - c. Cerebellum
3. What part of the brain controls thinking?
  - a. Cerebrum
  - b. Spinal Cord
  - c. Cerebellum
4. What part of the heart pumps the blood to the lungs?
  - a. Right Ventricle
  - b. Left Atrium
  - c. Right Atrium
5. What is the first place that blood enters the heart?
  - a. Right Ventricle
  - b. Right Atrium
  - c. Left Ventricle
6. When the blood enters the \_\_\_\_\_ it has oxygen, as it is returning from the lungs.
  - a. Left Ventricle
  - b. Right Ventricle
  - c. Left Atrium
7. What carries blood away from the heart?
  - a. Veins
  - b. Arteries
8. What part of the kidney works as a filter for the blood?
  - a. Renal Artery
  - b. Calyx
  - c. Ureter
9. What carries the waste urine from the kidney to the bladder?
  - a. Renal Vein
  - b. Calyx
  - c. Ureter

## True or False

1. \_\_\_\_\_ The cerebrum controls non-automatic movement
2. \_\_\_\_\_ The cerebellum controls thinking
3. \_\_\_\_\_ The spinal cord carries messages from the brain to the rest of the body
4. \_\_\_\_\_ The right atrium is the first place that blood enters the heart
5. \_\_\_\_\_ The left atrium receives blood from the lungs
6. \_\_\_\_\_ The right ventricle pumps blood out to the rest of the body
7. \_\_\_\_\_ Veins carry blood away from the heart
8. \_\_\_\_\_ The calyx works as a filter in the kidney
9. \_\_\_\_\_ The Ureter carries urine from the kidney to the bladder

## Bonus Question:

What is between the atrium and the ventricle that opens when the heart beats?